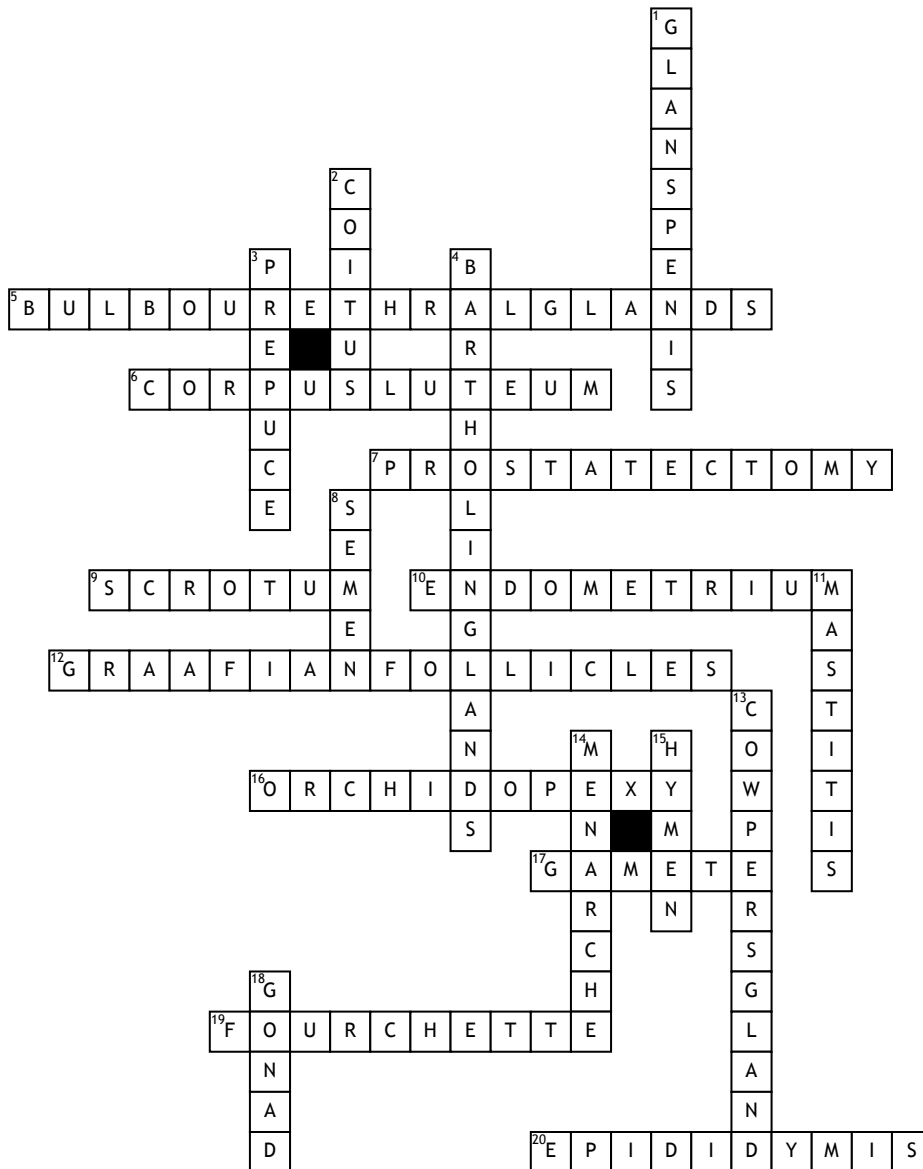


Name: _____

Date: _____

Vocabulary week 4



Across

5. located internally at the base of the penis and are part of the male reproductive system
 6. a yellowish mass that forms within the ruptured ovarian follicle after ovulation, containing high levels of progesterone and some estrogen
 7. removal of all or part of the prostate gland
 9. external sac that houses the testicles. It is located posterior to the penis and is suspended from the perineum.
 10. the inner lining of the uterus
 12. a mature, fully developed ovarian cyst containing the ripe ovum.
 16. surgical fixation of an undescended testicle

Down

17. A mature sperm or ovum
 19. a tense band of mucous membranes at the posterior rim of the vaginal opening: the point at which the labia minora connect.
 20. a tightly coiled tubule that resembles a comma. Its purpose is that of housing the sperm until they mature, becoming fertile and motile.

1. The tip of the penis
 2. Sexual intercourse or copulation
 3. Foreskin
 4. one of two small mucous glands located at the vaginal opening at the base of the labia majora

8. combination of sperm and various secretions that is expelled from the body through the urethra during sexual intercourse
 11. Inflammation of the breast
 13. a pair of pea-sized glands that empty into the urethra just before it extends through the penis
 14. onset of menstruation; the first menstrual period
 15. a thin layer of elastic, connective tissue membrane that forms a border around the outer opening of the vagina and may partially cover the vaginal opening.
 18. a gamete-producing gland such as an ovary or a testis.