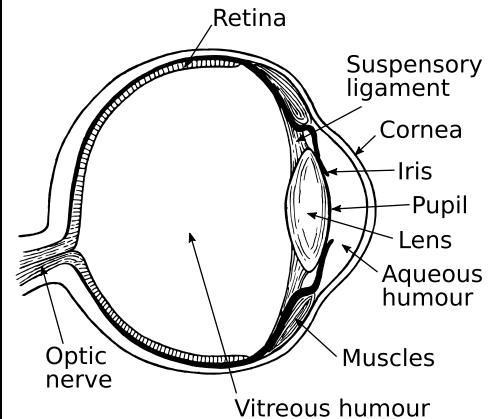
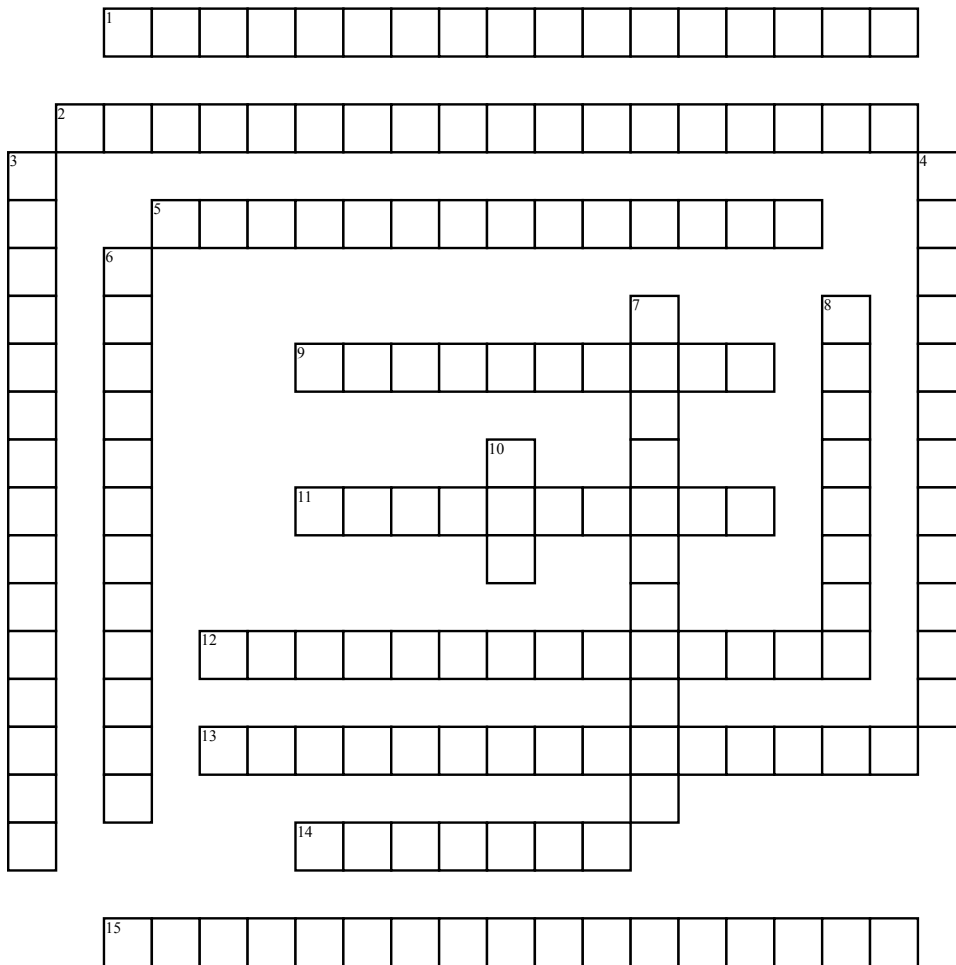


Name: _____

Date: _____

Introduction to Anatomy and Physiology



Across

1. The study of the physiology of specific organs
2. Concerns structures that cannot be seen without magnification
5. The cornerstone of human physiology is _____, the study of the functions of living cells
9. The study of the function of anatomical structures
11. The study of how living organisms perform their vital functions

12. Refers to the study of general form and superficial markings

13. The study of the functions of the human body

14. Means "a cutting open" the study of internal and external structures and the relationships between body parts

15. What system delivers air to sites where gas exchange can occur between the air and circulating blood?

Down

3. Considers the substructure of major organ systems, which are groups of organs that function together in coordinated manner
4. The study of the effects of diseases on organ or system functions
6. Considers features visible with the unaided eye
7. Refers to the existence of a stable internal environment
8. Analyzes the internal structure of individual cells
10. How many levels of organization are there in the human body?