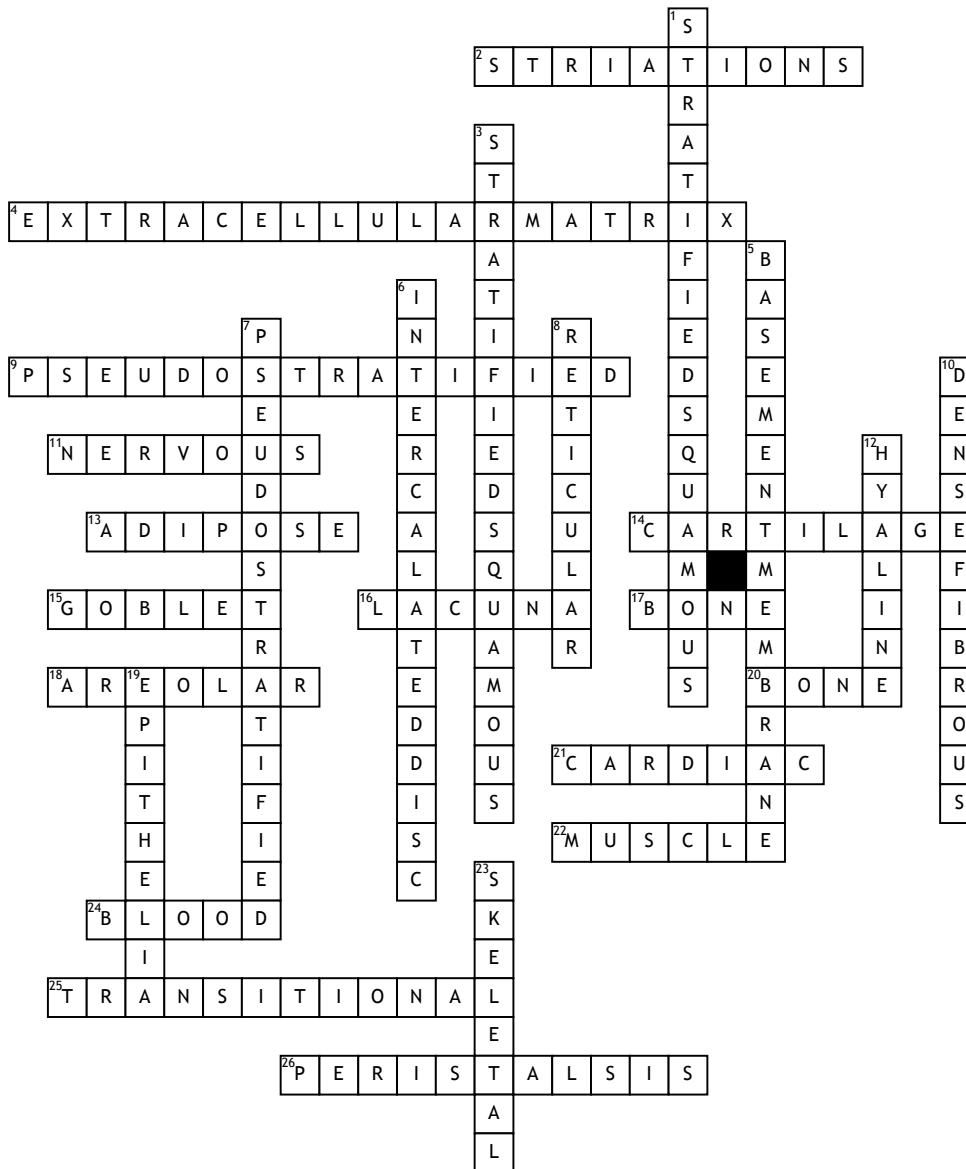


Name: \_\_\_\_\_

Date: \_\_\_\_\_

# Tissues



## Across

2. dark and light areas called \_\_\_\_ can be seen in skeletal muscle
4. nonliving substance found outside connective tissue cells and is made of structureless ground substance and fibers
9. epithelia that lines most of the respiratory tract
11. tissue that receives and conducts electrochemical impulses
13. type of connective tissue that insulates the body from temperature changes and protects from mechanical damage
14. type of connective tissue that is less hard and more flexible than bone
15. type of cell found within columnar epithelia secretes mucus
16. cells of connective tissue "live" in a cavity called \_\_\_\_.
17. type of connective tissue that surrounds and protects the soft organs

18. type of connective tissue that is soft and pliable and underlies the skin
20. type of connective tissue where cells are surrounded by a very hard matrix that contains calcium salts
21. involuntary muscle tissue found in the heart
22. type of tissue that is specialized to contract to produce movement
24. type of connective tissue that consists of a non living plasma, red cells, white cells, and platelets
25. type of epithelia that is found in the urinary bladder
26. type of muscle contraction produced by smooth muscle that allows material to move along a tube in one direction

## Down

1. flat epithelia that is in multiple layers

3. epithelia that is found in the esophagus, mouth, and outer portion of the skin
5. structure that the lower surface of epithelial cells rests upon
6. type of gap junction found in cardiac muscle that allows quick communication between heart cells
7. columnar epithelia that appears to be in multiple layers but is not
8. type of connective tissue that forms the framework of filter organs like the spleen and lymph nodes
10. type of connective tissue that makes up tendons and ligaments
12. type of cartilage that is found in the larynx, ribs, and ends of bones
19. tissue type that lines organs and is responsible for protection, secretion, absorption, and filtration
23. voluntary muscle tissue