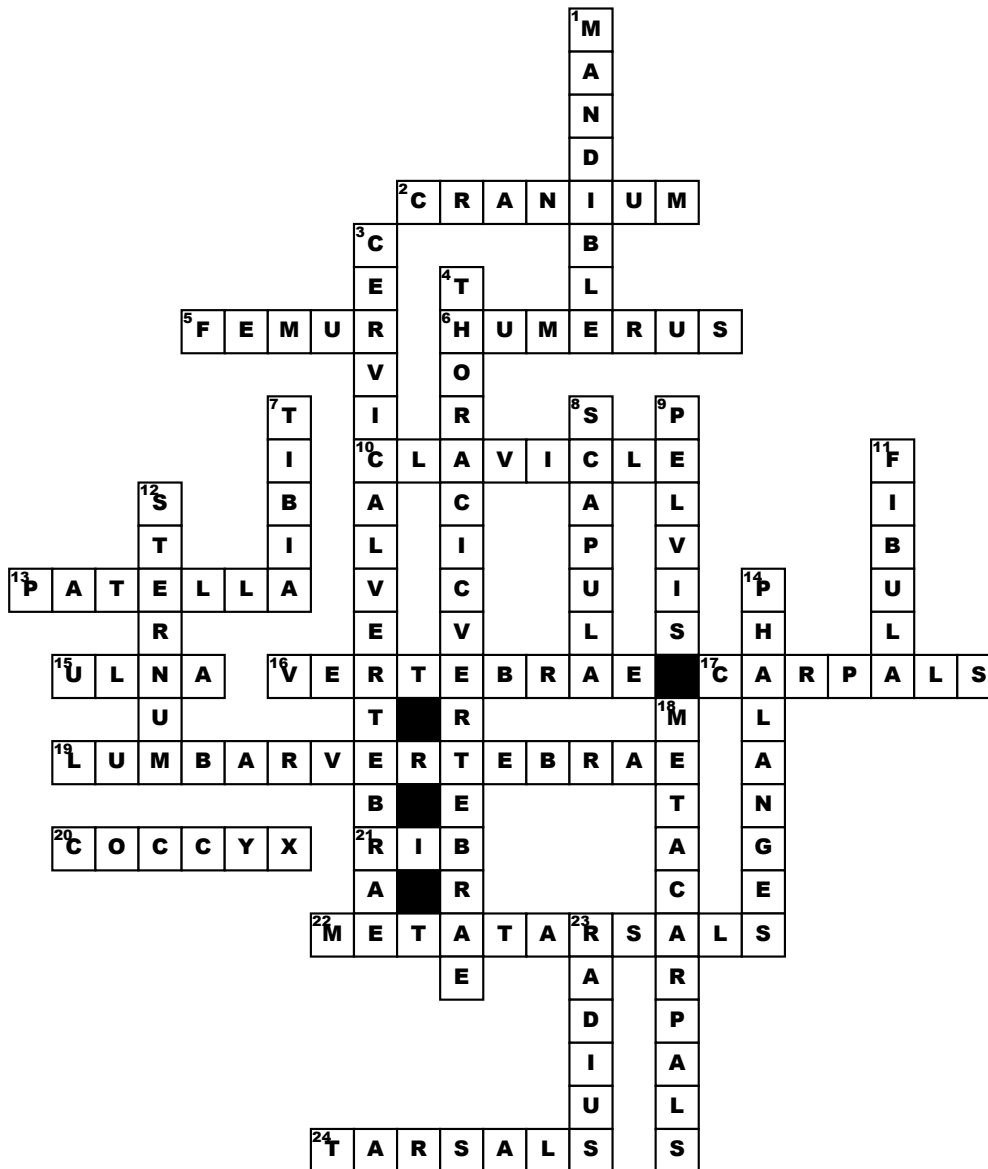


# SKELETAL SYSTEM



## Across

2. The skull, especially the part enclosing the brain

5. a bone in the human leg extending from the pelvis to the knee, that is the longest, largest, and strongest in the body; thighbone

6. the bone of the upper arm or forelimb, forming joints at the shoulder and the elbow

10. Each of a series of slender curved bones articulated in pairs to the spine, protecting the thoracic cavity and its organs

13. kneecap

15. the thinner and longer of the two bones in the human forearm, on the side opposite to the thumb

16. Each of the series of small bones forming the backbone, having several projections for articulation and muscle attachment, and a hole through which the spinal cord passes

17. are the eight small bones that make up the wrist (or carpus) that connects the hand to the forearm.

19. The 5 vertebrae situated between the thoracic vertebrae and sacral vertebrae in the spinal column

20. A small, triangular bone at the base of the spinal column in the spinal column, formed of fused vestigial vertebrae

21. each of a series of slender curved bones articulated in pairs to the spine (twelve pairs in humans), protecting the thoracic cavity and its organs

22. Any of the bones of the foot

24. The fibrous plate that supports and shapes the edges of the eyelids.

## Down

1. The jaw or a jawbone

3. The top 7 types of vertebrae that forms the spine and form the neck, which supports the skull, or cranium

4. Each of the 12 bones of the backbone to which the ribs are attached

7. The inner and typically larger of the two bones between the knee and the ankle, parallel with the fibula

8. either of the large, flat, triangular bones that lie against the ribs in the upper back and provide attachments for the bone and muscles of the upper arm

9. the large bony structure near the base of the spine to which the hind limbs or legs are attached in humans and many other vertebrates

11. The outer and usually smaller of the two bones between the knee and the ankle in humans, parallel with the tibia

12. the breastbone

14. A bone of the finger or toe

18. Any of the five bones in the hand

23. the thicker and shorter of the two bones in the human forearm