

Name: _____

Date: _____

Algebra 2 Crossword Puzzle

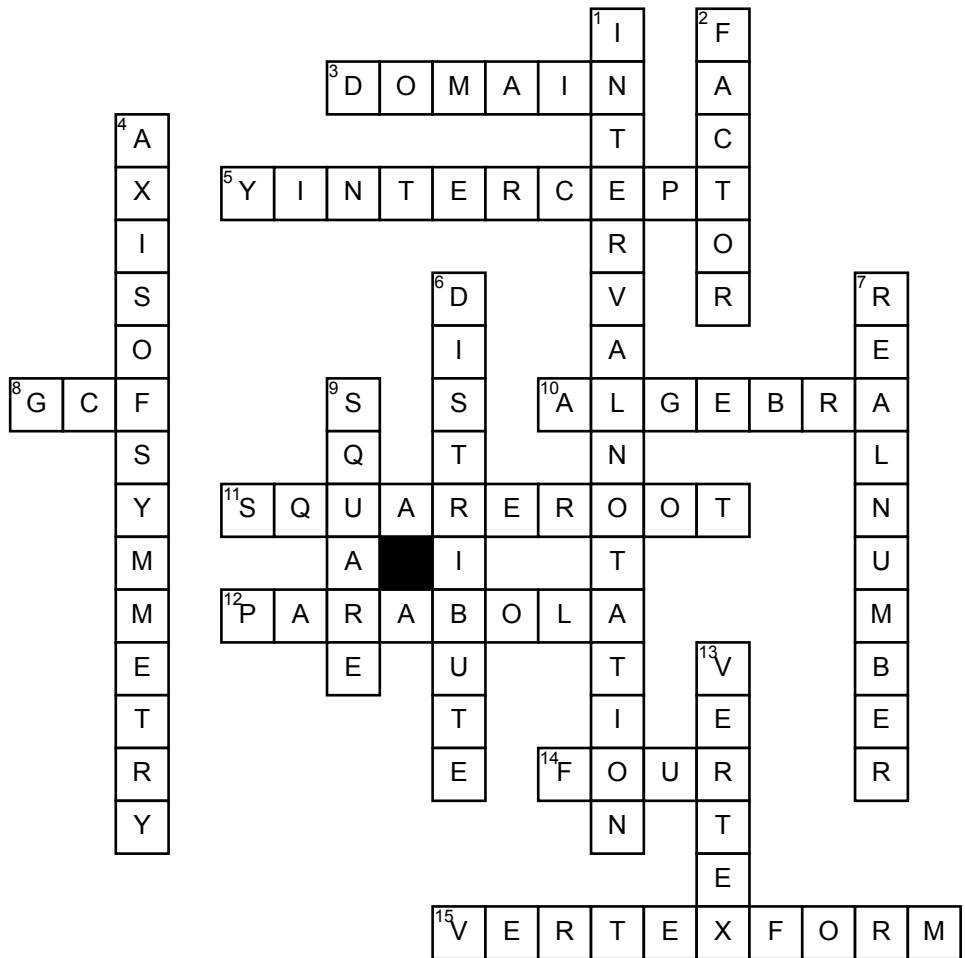
Across

- 3.** Negative infinity, positive infinity
- 5.** The point where the graph intersects the y-axis
- 8.** What is the first thing you need to find in this equation?
 $2x + 10x - 8 = 26$
- 10.** The part of mathematics in which letter and other general symbols are used to represent numbers and quantities in formulas and equations
- 11.** A number that produces a specified quantity when multiplied by itself

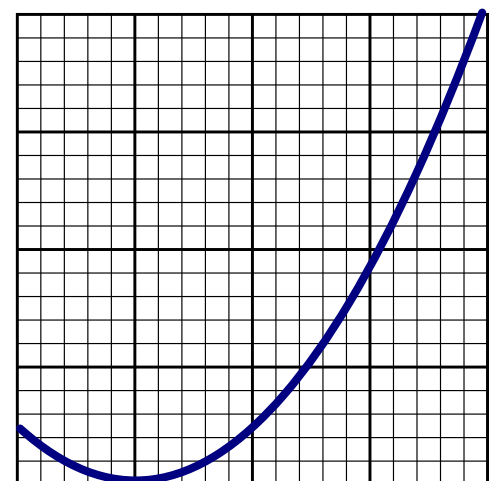
- 12.** Shape defines by a quadratic equation
- 14.** There are _____ terms in the imaginary pattern
- 15.** What form is this?
 $y = a(x-h) + k$

Down

- 1.** Set of numbers which contains all numbers less than 0 and also all numbers greater than 2
- 2.** What do you do first?



- 4.** You use this formula to find this.. $x = -b/2a$
- 6.** What do you do first to this equation?
 $(5+7i) + 2(-2+6i)$
- 7.** What comes first the real number or imaginary number
- 9.** What do you have to do to get rid of the square root?
- 13.** What does the point represent?



$$y = ax^2 + bx + c$$