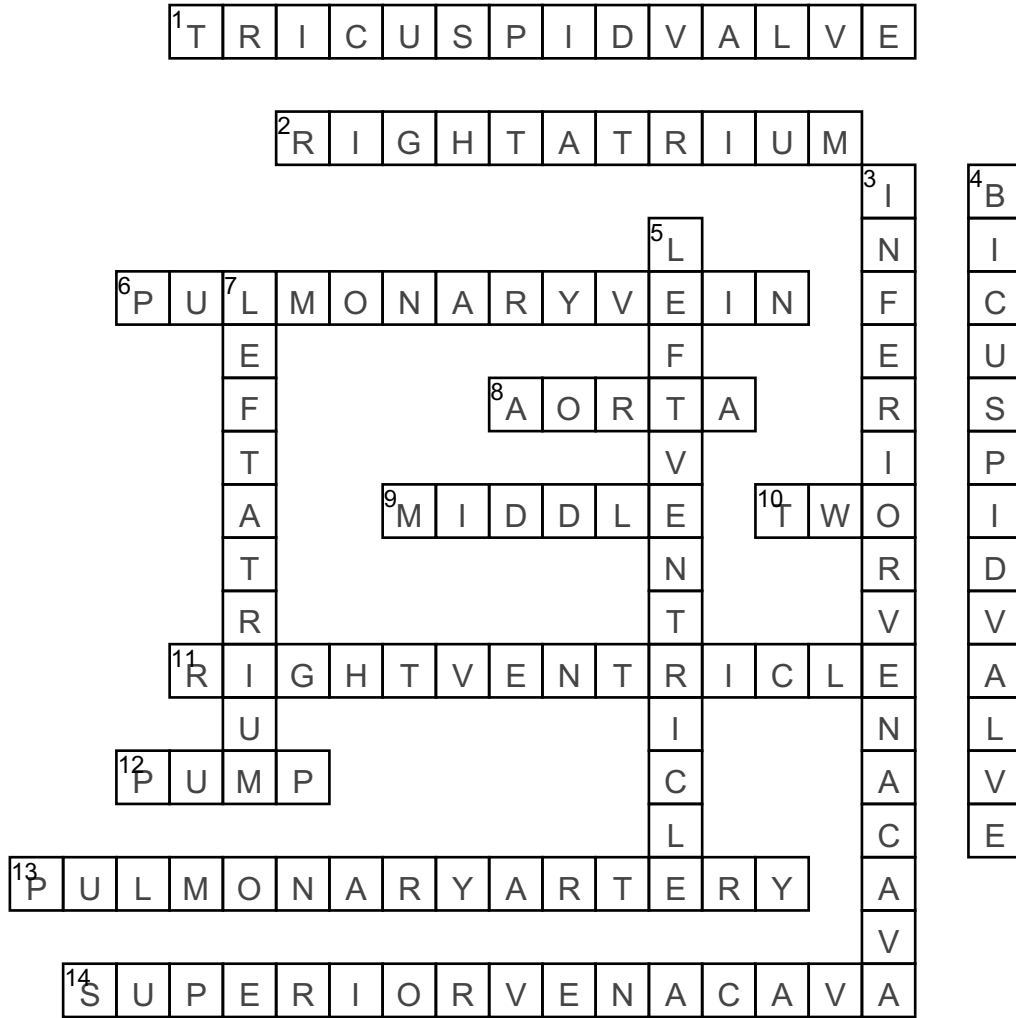


The Heart



Across

- prevents back flow of the blood into right atrium
- receives deoxygenated blood from the body
- takes oxygenated blood from the lungs to the left atrium
- Body's largest artery
- Your heart is located in the ____
- Your heart circulates blood through ____ pathways
- responsible for pumping oxygen depleted blood to the lungs
- Your heart is one giant ____
- Carries deoxygenated blood from the right ventricle to the lungs
- Brings deoxygenated blood from the body to the hearts

Down

- vein that carries deoxygenated blood from lower body to the heart
- also known as the mitral valve, permits blood to flow one way only
- receives oxygenated blood from the left atrium and pumps it through the aorta
- oxygen-rich blood from the lungs enters the left atrium through pulmonary vein