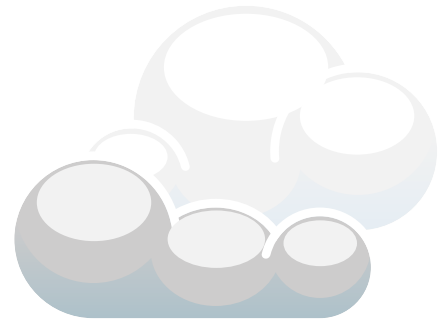
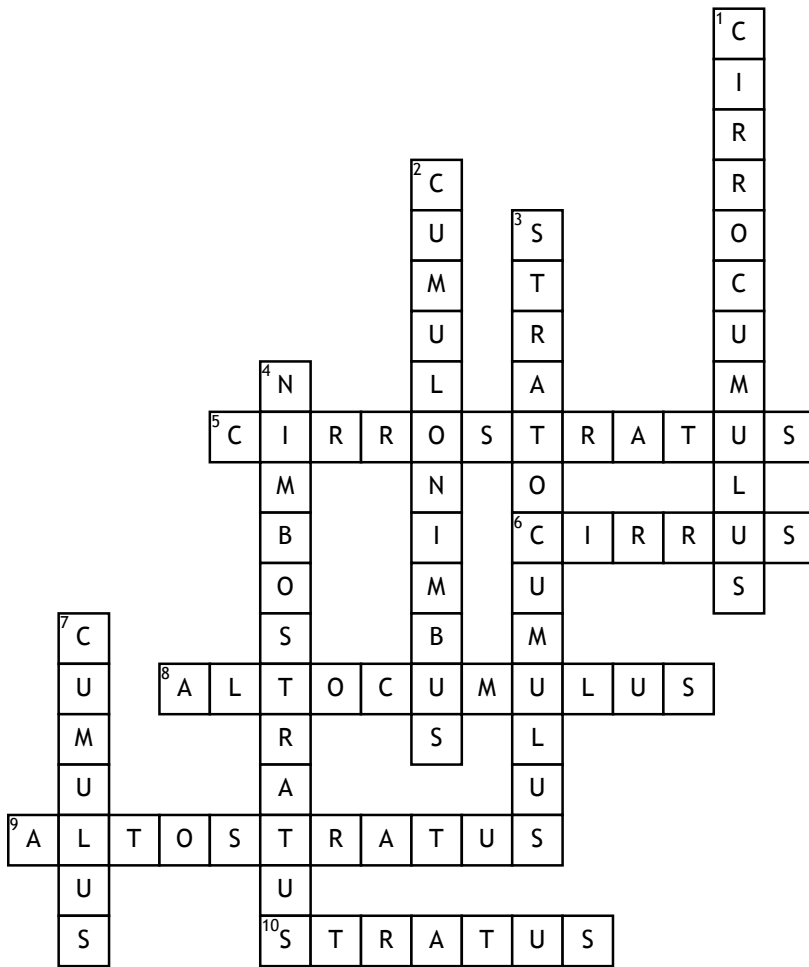


Name: \_\_\_\_\_

Date: \_\_\_\_\_

# Clouds and Weather



## Across

5. A high-level, thin, milky, hazy, veil-like cloud, usually covering the sky and bringing rain within 12hrs
6. High-level ice-crystal clouds, often a sign of bad weather
8. A cloud formation of rounded, fleecy, white/grey masses arranged in bands or waves
9. Mid-level extended cloud formation of bluish or grey sheets or layers, which can develop into rain clouds
10. A low-level shapeless foggy cloud

## Down

1. A high-level cloud made of a series of small, regularly arranged cloudlets in the form of ripples or grains
2. Extremely dense cloud developed vertically, usually producing heavy rains, thunderstorms or hailstorms
3. Low-level heavy cloud with round grey masses, often covering the sky but with small breaks
4. Low-level grey cloud, often dark, that precipitates rain, snow or sleet
7. Low-level fluffy cauliflower-looking cloud