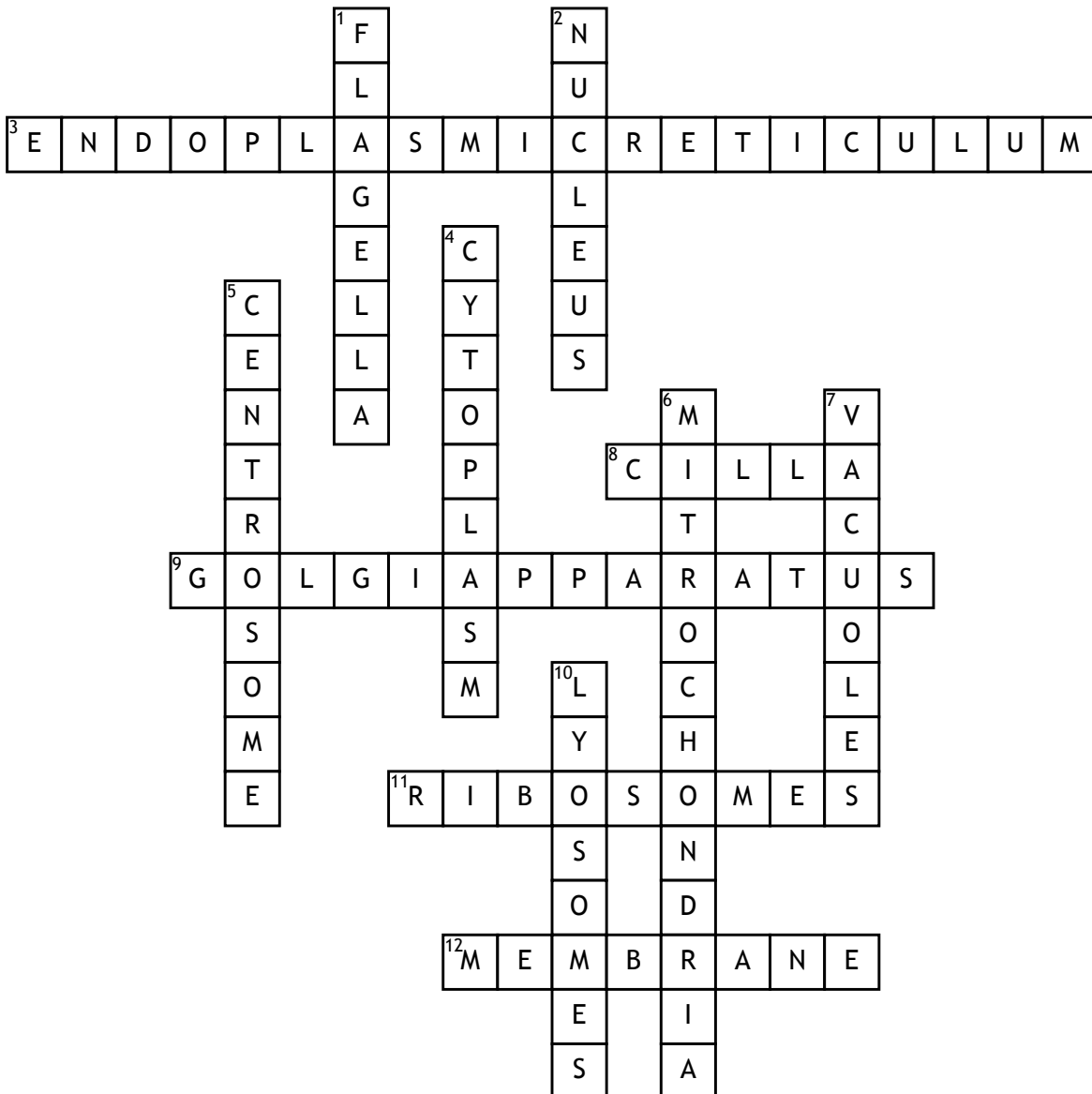


Cells



Across

3. Specialised structure can be found in two forms, rough and smooth

8. Tiny hair like structures found on the edge of some cells

9. This organelle processes proteins

11. These are the factories of a cell

12. This structure encloses and surrounds the cell

Down

1. Tail of the sperm

2. The brain of the cell

4. Jelly like substance

5. Small rod shaped body that is vital for cell division

6. This is the powerhouse of a cell

7. Clear spaces within the cytoplasm that contain waste

10. Manufactured in the R.E.R and contain digestive enzymes