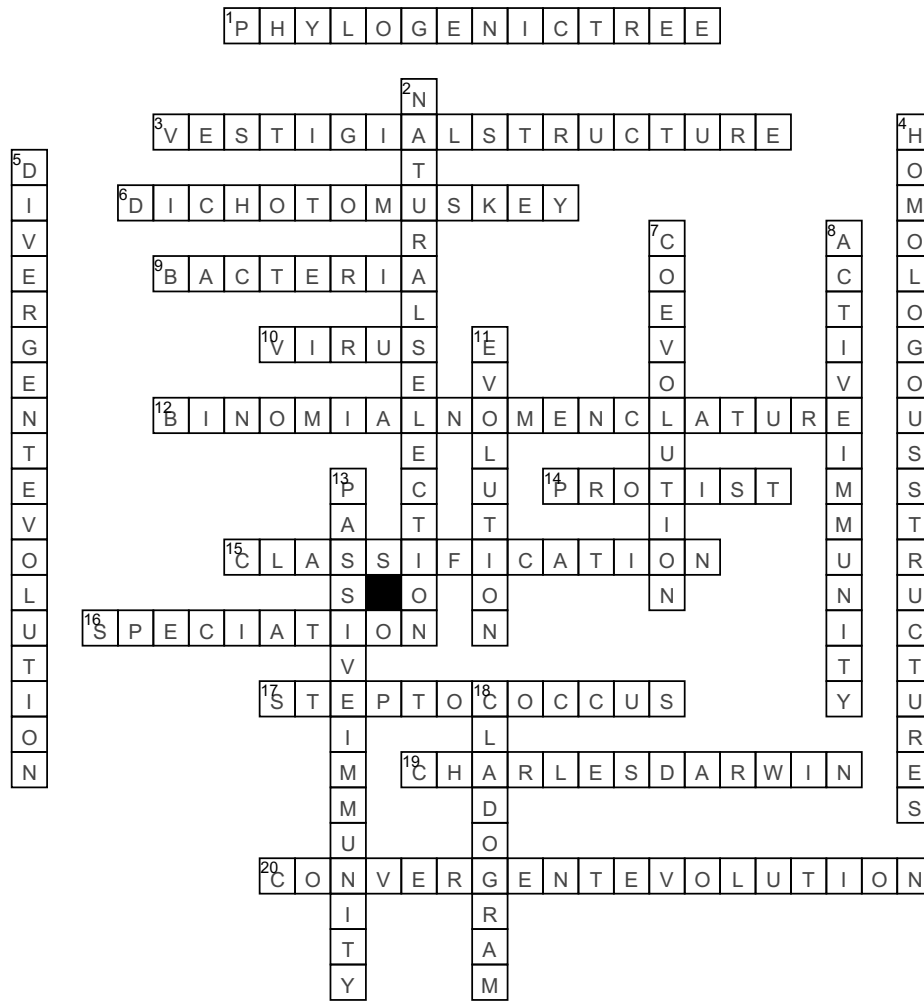


Evolution & Classification



Across

1. diagram beginning with common ancestor CHAVIRUSSLPDEEISPCCD RIHAOAORTTTWIIOBI SOMDIVERGENTEVOLUTIONONUH OMOLOGOUSSTRUCTURES MKIECLASSIFICATIONYLNAT URALSELECTIONOBMAVESTIGIALSTRUCTURECNCCTCON VERGENTEVOLUTIONELERPASSIVEIMMUNITYVITOACTI VEIMMUNITYLLRSUAPHYLOGENETICTREETDVRIOOEOG LPNRUTATOMICOOCCUS
2. Survival of the fittest
3. useless structure
4. identify species based on physical characteristics
5. Eukaryotic organism (often single-celled); classified as plant-like, animal like or fungus-like
6. System of naming organisms based on their scientific genus and species
7. two or more populations evolve at the same time
8. production of antibodies
9. PROKARYOTIC
10. non-living pathogen harmful effects
11. gradual change
12. naming organisms based on scientific genus and species
13. transfer of antibodies
14. Occurs when different species develop similar traits for similar functions
15. Transfer of antibodies
16. Production of antibodies
17. A diagram beginning with an outgroup organism
18. Genus of bacteria
20. The change in a species as a whole over time

Down

2. Survival of the fittest
4. structures originating from the same type of tissue
5. two or more species evolve to be different
7. two or more populations evolve at the same time
8. production of antibodies
11. gradual change
13. transfer of antibodies
18. diagram beginning with an outgroup organism

16. emergence of a new species
17. strep throat
19. Developed the idea of natural selection
20. different species develop similar traits