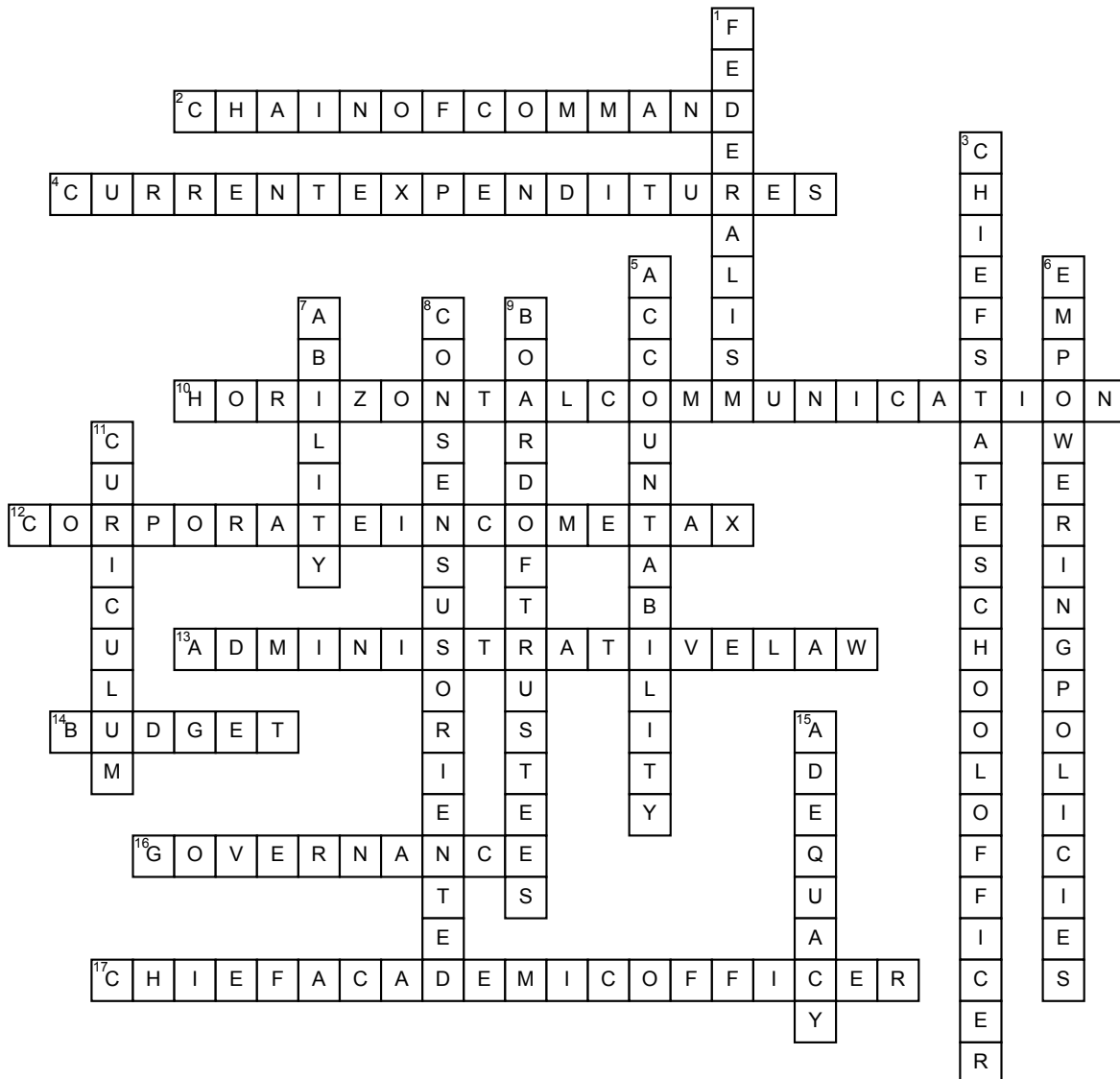


Name: _____

Date: _____

Chapter 8 Vocab



Across

2. Frequently used phrase to refer to the up/down line relationships in an organization chart that determine who reports to whom.
4. Funds spent during a specific school year.
10. Communications across the various levels in the organization chart.
12. Taxes paid by corporations to federal and state governments.
13. The regulations, rules, and procedures, based on legislation, that specify what states, schools, teachers, and others must do.
14. The predetermined amount of money available for an authorized activity.
16. The progresses and administration of managing an organization for the purpose of making decisions and implementing actions.

17. A position that provides districtwide leadership in relation to instruction, assessment, curriculum, and improvement of the overall quality of educational services.

Down

1. Involvement of the federal government in making decisions about education for the whole nation.
3. State superintendent of public instruction or commissioner of education who may be elected or appointed by the state board of education or governor.
5. Teachers, administrators, and other school officials taking responsibility and being held responsible for student learning and the effective and efficient use of public resources.
6. Statements or guidelines that identify a goal or vision but leave open the means for achieving the desired end.

7. Capacity to achieve as a result of physical or mental aptitude and training.
8. Decision making through open dialogue, rather than by way of ultimatums and refusals to negotiate.
9. Governing body that has responsibility for developing the official policies and guidelines for the educational system.
11. The lessons and academic content taught by teachers to help students meet standards and objectives.
15. The degree to which there are sufficient funds to accomplish the objectives.