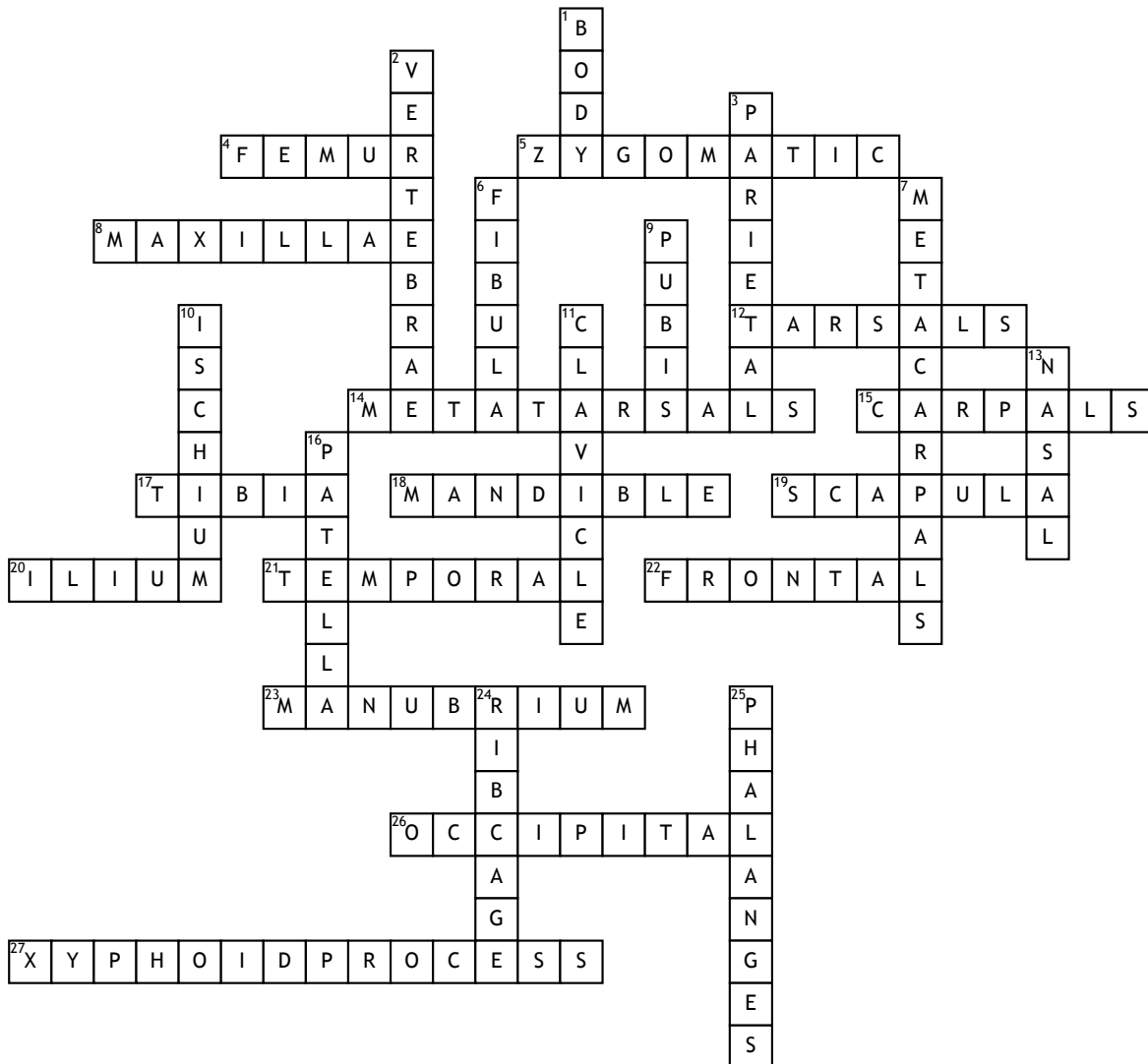


Name: \_\_\_\_\_

Date: \_\_\_\_\_

# Bones of the Body



## Across

4. The bone of the thigh between the hip and the knee
5. A quadrilateral bone that forms the cheek
8. Upper jawbone that forms part of the nose and eye socket
12. Seven irregularly shaped bones found in the ankle and foot
14. Bones behind the phalanges
15. Eight of the wrist bones
17. The inner and typically larger of the two bones between the knee and the ankle
18. Lower jawbone
19. Shoulder blade
20. The large broad bone forming the upper part of each half of the pelvis

21. Lobe of the brain lying beneath the temples
22. Lobe of the brain lying immediately behind the forehead
23. The broad upper part of the sternum
26. Rearmost lobe in each cerebral hemisphere of the brain
27. The cartilaginous section at the lower end of the sternum

## Down

1. The middle and largest portion of the sternum
2. Small bones forming the backbone
3. Lobe of the brain at the top of the head
6. The outer, narrower, and smaller of the two bones of the human lower leg, extending from the knee to the ankle

7. Any of the five bones of the hand
9. Either of a pair of bones forming the two sides of the pelvis
10. The curved bone forming the base of each half of the pelvis
11. Collarbone
13. Elongated rectangular bone that forms the bridge of the nose
16. Kneecap
24. The bony frame formed by the ribs around the chest
25. Bones of the fingers and toes